

ManX

Manntree®

ManX raw materials based on the Manx isle, Manx isle has the manufacture must be used in isle of lime base of pebbles, the quality of the pebbles from a local called "Niarbyl" river, after a pollution-free water washed for a long time, makes the pebbles exceptionally smooth and white, a day of many raw materials procurement from Manntree division will be chosen every pebble to carry on the deep processing, after calcining, filtration, sedimentation and let stand for 48 after working procedure, can be applied directly in the isle of lime base.

Today, ManX which was chosen as the main raw material of Manx isle, brings the natural raw material to China.

Applications

Main ingredients:

Limestone, nano calcium carbonate, inorganic minerals, cellulose.

Construction process:

- 1. Directly batch "ManX" again, and pay attention to leveling.
2. Perform a second pass to the batch and then batch at the irregular surface.
3. Perform irregular polishing before "ManX" is dry.

Selective construction:

After drying for 24 hours, if water repellent treatment is required, a waterproof glaze wax may be selected.

Shelf life:

12 months under normal temperature and dry condition (original factory)

Technical Description:

- 1. The same wall cannot be applied to different batches of material.
2. different bases will make the color (possibly) different.
3. Materials that have been mixed with water should be used up within 24 hours.
4. Waterproof wax must be used when it is applied to a non-waterproof wall or used in a bathroom.

Precautions:

Pay attention to the critical point of the environment: the temperature is lower than 5 °C, and the relative humidity is more than 85%.

Manntree®

— Paint My Love —

Technical data sheet

Table with 8 columns: Product, Use, Dilution with water, Approx. Coverage, Tools, Overcoating, Colour, Pack. It details application steps for interior surfaces, including primer, main material, and finishing wax.

Manntree®

— Paint My Love —

Manntree Paint Co.,Ltd.
Tel: +44-20-32390208
Web: www.manntree.co.uk

Headquarters :
3rd Floor, No.207 Regent
street, London, United Kingdom



Design by Manntree in United Kingdom



Manntree®
— Paint My Love —

LIME PAINT
STYLE FROM ENGLAND

Manntree®
Paint My Love

Manntree®
Paint My Love

Manntree®
Paint My Love

Manntree®
Paint My Love

Manntree®
Paint My Love

**Manntree**<sup>®</sup>  
— Paint My Love —

**Manntree**<sup>®</sup>  
— Paint My Love —

**Manntree**<sup>®</sup>  
— Paint My Love —

**MAN**



**Manntree**<sup>®</sup>  
— Paint My Love —

**Manntree**<sup>®</sup>  
— Paint My Love —

**Manntree**<sup>®</sup>  
— Paint My Love —

**Manntree**<sup>®</sup>  
— Paint My Love —

**Manntree**<sup>®</sup>  
— Paint My Love —

**Manntree**<sup>®</sup>  
— Paint My Love —

**Manntree**<sup>®</sup>  
— Paint My Love —

**Manntree**<sup>®</sup>  
— Paint My Love —

**Manntree**  
— Paint My Love —

**Manntree**  
— Paint My Love —

**Manntree**  
— Paint My Love —

**Manntree**  
— Paint My Love —

**Manntree**  
— Paint My Love —

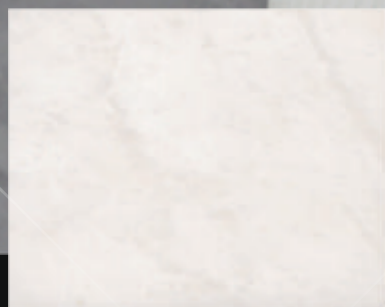
**Manntree**  
— Paint My Love —

**Manntree**  
— Paint My Love —

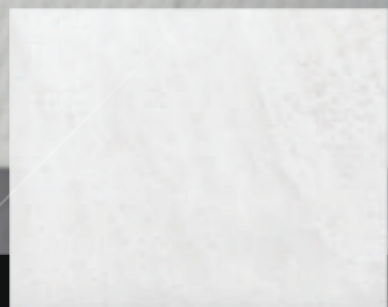
**Manntree**  
— Paint My Love —

**Manntree**  
— Paint My Love —

**Manntree**  
— Paint My Love —



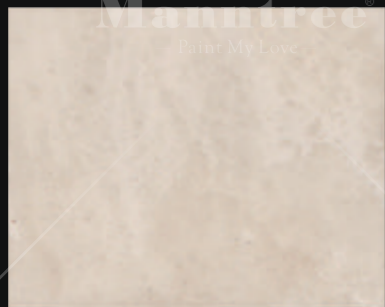
MAS - M76A



MAS - M74A



MAS - M90A



MAS - M73A



MAS - M77A



MAS - M91A



MAS - M79A



MAS - M23A



MAS - M80A



MAS - M51A

ManX raw materials based on the ManX isle, ManX isle has the manufacture must be used in isle of lime base of pebbles, the quality of the pebbles from a local called "Niarbyl" river, after a pollution-free water washed for a long time, makes the pebbles exceptionally smooth and white, a day of sedimentation and let stand for 48 after working procedure, can be applied directly in the isle of lime base.

Today, ManX which was chosen as the main raw material of ManX isle, brings the natural raw material to China.

**Manntree**  
Paint My Love

### About Manntree

Manntree is established in Mann, UK. Adapt to the pace of global extension, Our headquarter has been set up in London in 2015, and named "Manntree" formally. Since 1980, Manntree team was focus on developing and designing the Environmental Artist Coating, and supplied Research and development services to many International famous brands.

### Manntree Today

Manntree represents the Innovation, Concept and Environmental. Our team is committed supply clients with a full range of Artist colors and inspiration of environmental coating, and one-stop considerate services.

### GLOBAL Manntree

Manntree intergrates the European minimalist design, the freedom and spirit of innovation of England, the advantage of production base in China, experienced team management and brand operation. We swear to show to all clients with fashion design, excellent quality and best services.

# Manntree®

— Paint My Love —

## ManX the four elements

### Stone:

We begin from the stone, stone again, after a series of separation, transformation, finally extract natural mineral essence, the stone itself without affecting its naturalness, durability, and vapor permeability, this kind of material, referred to as "the most natural and environmental protection" lime base material.

### Water:

The more water that is added to the desalination process, the higher the efficiency of the oxidation reaction, which is essentially a slow reaction process.

We add water to the lime to produce a highly exothermic process, which is often in contact with water due to the rotation of the machine. The strong reaction absorbs a large amount of water, and the temperature of steam generated by exothermic heat exchange is as high as 150°C (300°F). This is a chemical reaction, the hydration of the oxide, and also the physical reaction, to turn the state from a solid into a hot emulsion, called calcium hydroxide, or calcareous lime or lime milk.

### Fire:

We will pick some of the wood from the years to be the best burning material, In different weather conditions, with different mixtures to ensure optimum combustion temperature. The smaller limestone is separated to get the same size of load, and eventually the limestone is cooked evenly. The cooking process of these stones is very slow and steady, with an average temperature of 900 degrees (about 1650 degrees Fahrenheit), a process that takes about seven days. At this stage, calcium carbonate and magnesium carbonate release carbon dioxide, reducing the weight of the stones by a third.

### Time:

We put these through a series of chemical reactions and physical response of hydrated lime, after about three months later, after a continuous "fermentation" slaked lime began to present a "creamy" at present, but from raw material to the final molding and put into use, the whole stage need for 24 months or so. After 24 months of continuous hydration, particles from the macro and orderly arranged to micro crystal structure, originally soft mud also completely with the softness and consistency, finally only achieve full saturation "creamy" slaked lime, can guarantee that is used in the isle of lime base material.



## The kiln



Limestone stove inherited from 1898 to the present and lime-based calcining clothing inherited from Britain

## The slaking

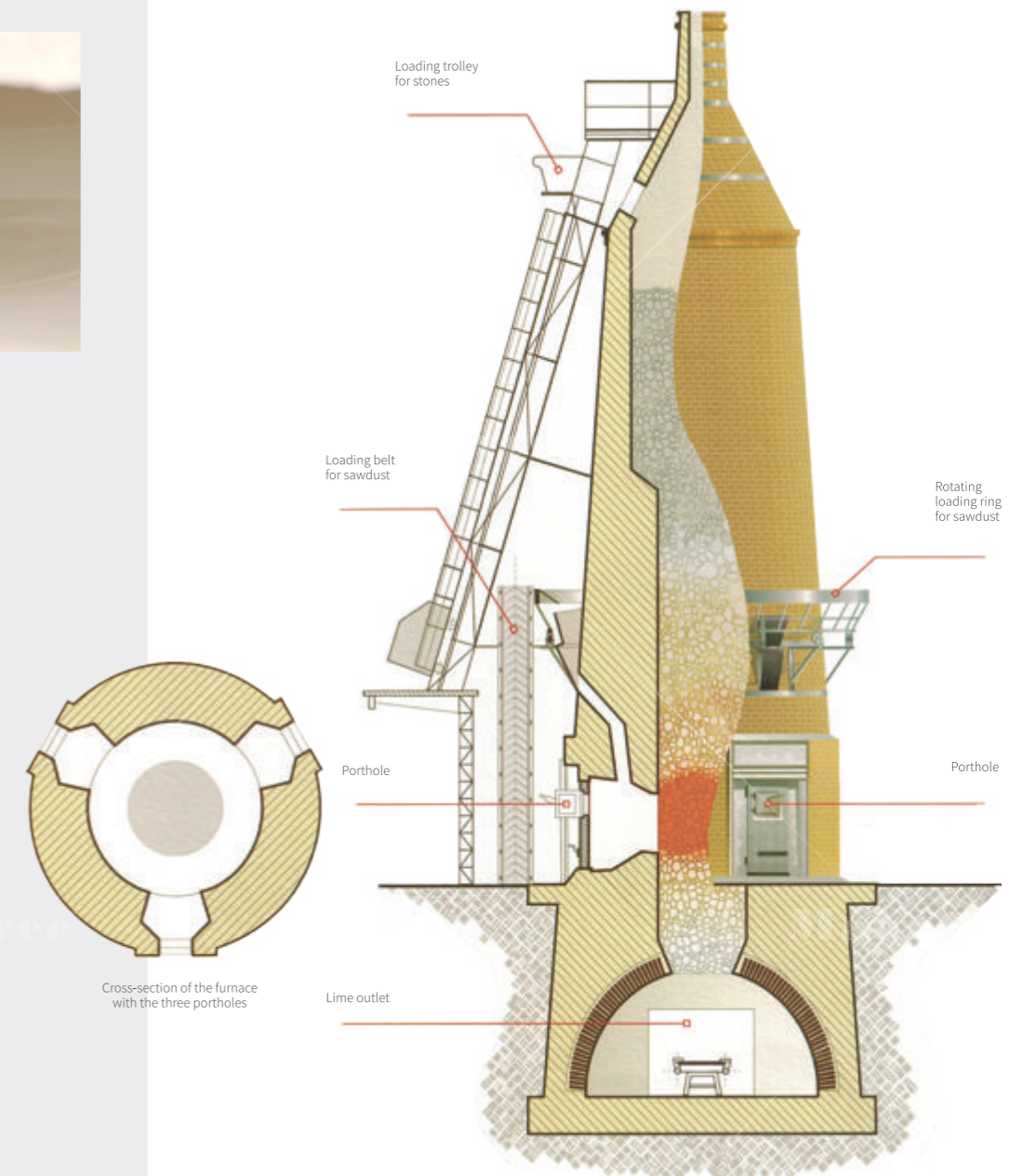


The original material is pebbles from Man Island, England.



After 48 processes such as calcination, filtration, precipitation and stationary, it can be directly applied to manx.

## Lime production



**Manntree**  
— Paint My Love —

STYLISH  
HOUSE FOR  
ENVIRONMENTAL  
LIFESTYLE

**Manntree**  
— Paint My Love —

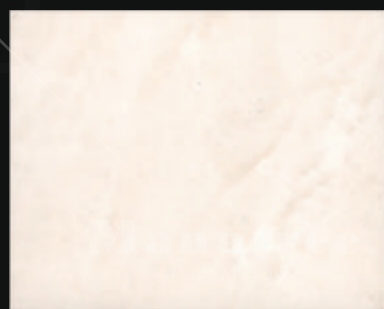
**Manntree**  
— Paint My Love —



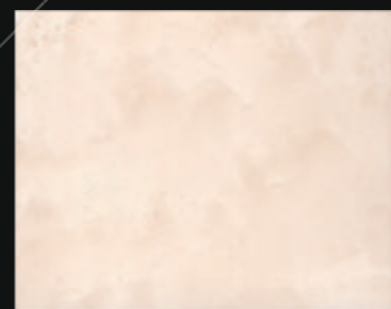
**Manntree**  
— Paint My Love —



MAS - M09A



MAS - M05A



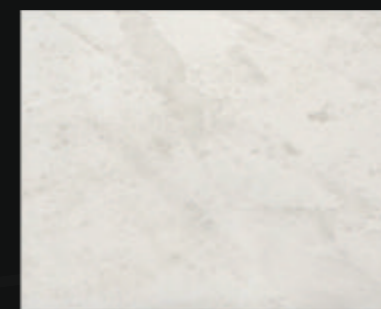
MAS - M12A



MAS - M10A



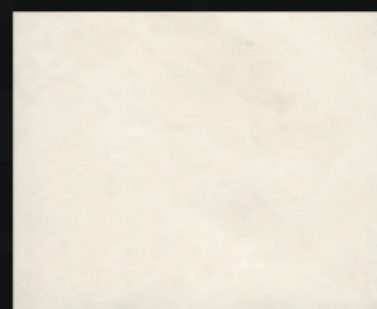
MAS - M63A



MAS - M66A



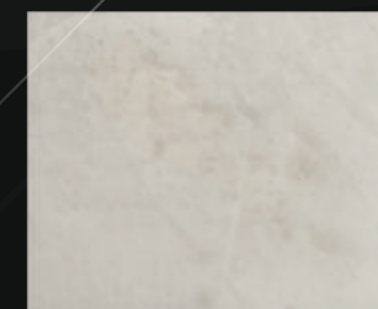
MAS - M69A



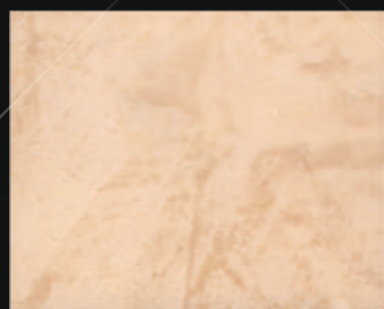
MAS - M62A



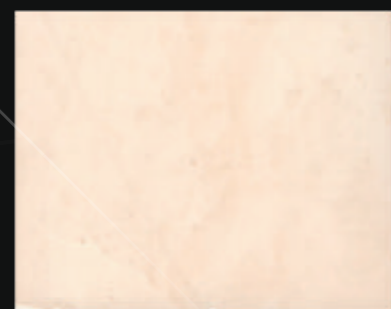
MAS - M65A



MAS - M68A



MAS - M27A



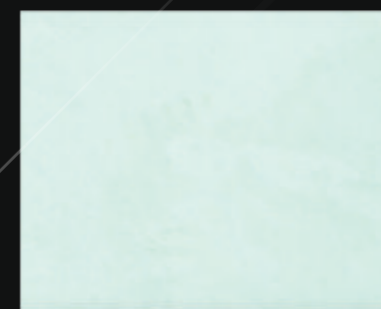
MAS - M11A



MAS - M50A



MAS - M64A



MAS - M92A



MAS - M67A

**Manntree**  
— Paint My Love —

**Manntree**  
— Paint My Love —

**Manntree**  
— Paint My Love —



**Manntree**  
— Paint My Love —

**Manntree**  
— Paint My Love —

**Manntree**  
— Paint My Love —

**Manntree**  
— Paint My Love —

**Manntree**  
— Paint My Love —

**Manntree**  
— Paint My Love —

# INNOVATION | CONCEPT | ENVIRONMENTAL

Design by Manntree in United Kindom

**Manntree**  
— Paint My Love —

**Manntree**  
— Paint My Love —

**Manntree**  
— Paint My Love —

[www.manntree.co.uk](http://www.manntree.co.uk)

**Manntree**  
— Paint My Love —

**Manntree**  
— Paint My Love —

**Manntree**  
— Paint My Love —