



About Manntree

Manntree is established in Mann,  
Adapt to the pace of global extension,  
Our headquater has been set up in London in 2015,  
and named “Manntree” formally.  
Since 1980,  
Manntree team was focus on developing and  
designing the Environmental Artist Coating,  
and supplied Research and development services to  
many International famous brands.

Manntree Today

Manntree represents the Innovation,  
Concept and Environmental.  
Our team is committed supply clients with a full  
range of Artist colors and inspiration of environmental  
coating,and one-stop considerate  
services.

GLOBAL Manntree

Manntree intergrates the European minimalist design,  
the freedom and spirit of innovation of U.K,  
experienced team management and brand operation.  
We swear to show to all clients with  
fashion design,  
excllent quality and best services.

- Technical note:
- (1) Different batches of materials can not be applied to the same wall.
  - (2) Different base planes will make the color (possible) different.
  - (3) Material that has been mixed with water should be used up within 24 hours.
  - (4) Waterproof superwax must be used when it is applied to non-waterproof walls or toilets.

- Matters needing attention:
- (1) First, stir well.
  - (2) Attention should be paid to the environmental critical point: when the temperature is lower than 5 C and the relative humidity is higher than 85%, the construction can not be carried out.
  - (3) Keep out of reach of children.

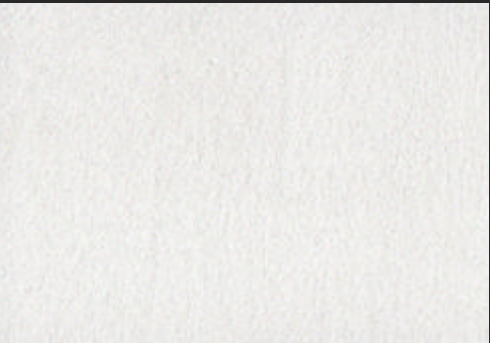
Technical support:  
You can log on to Manntree's official website [www.manntree.co.uk](http://www.manntree.co.uk)  
at any time to get the latest information about this product.  
( The English translation should be used when this scheme is  
applied to packaging or color cards. )



TCF - M40(30g)

PSX - M40(30g)

STYLISH  
HOUSE  
FOR  
ENVIRONMENTAL  
LIFESTYLE



PSX - Based



TCF - M66(30g)

PSX - M66(30g)



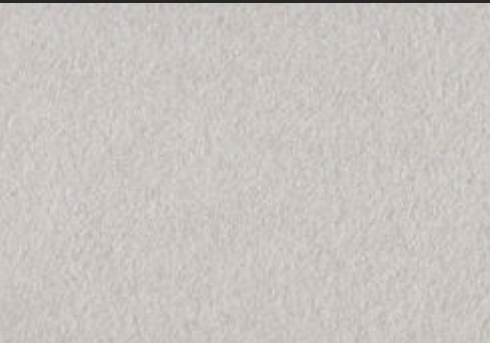
TCF - M66(50g)

PSX - M66(50g)



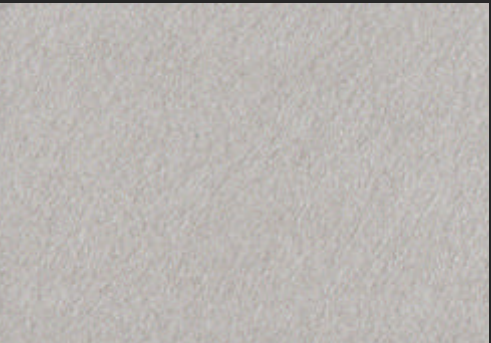
TCF - M66(100g)

PSX - M66(100g)



TCF - M72(30g)

PSX - M72(30g)



TCF - M72(50g)

PSX - M72(50g)



TCF - M72(100g)

PSX - M72(100g)



TCF - M40(30g)

PSX - M40(30g)



TCF - M40(50g)

PSX - M40(50g)



TCF - M40(100g)

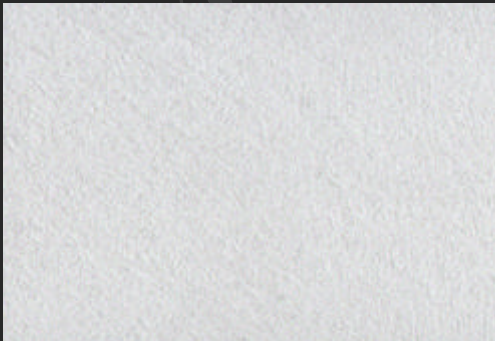
PSX - M40(100g)





**Manntree®**  
— Paint My Love —

**Manntree®**  
— Paint My Love —



TCF - M77(30g)

PSX - M77(30g)



TCF - M77(50g)

PSX - M77(50g)



TCF - M77(100g)

PSX - M77(100g)



TCF - M74(30g)

PSX - M74(30g)



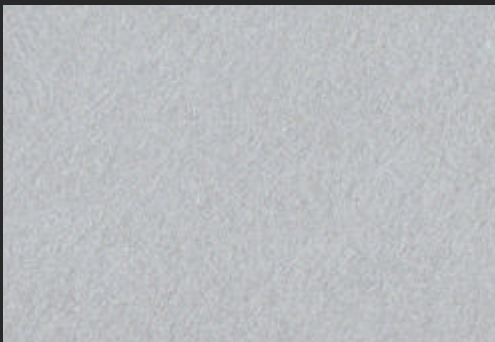
TCF - M74(50g)

PSX - M74(50g)



TCF - M74(100g)

PSX - M74(100g)



TCF - M80(30g)

PSX - M80(30g)



TCF - M80(50g)

PSX - M80(50g)



TCF - M80(100g)

PSX - M80(100g)



TCF - M89(30g)

PSX - M89(30g)



TCF - M89(50g)

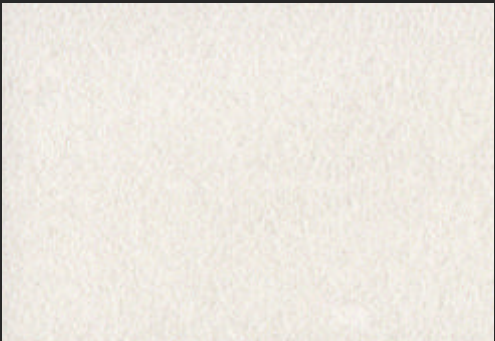
PSX - M89(50g)



TCF - M89(100g)

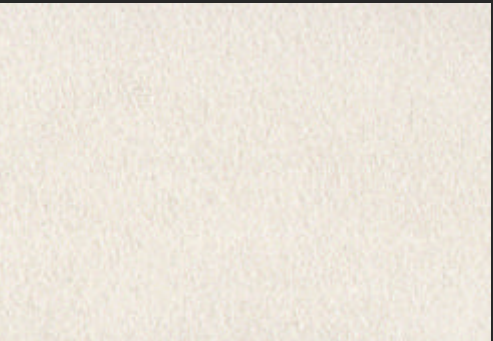
PSX - M89(100g)





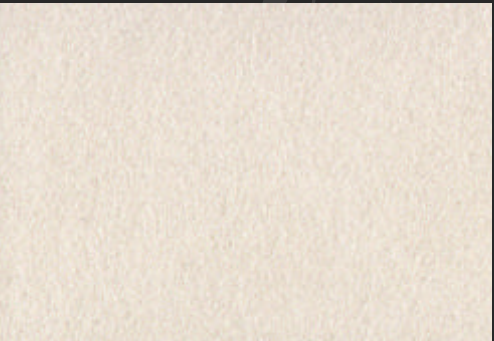
TCF - M07(30g)

PSX - M07(30g)



TCF - M07(50g)

PSX - M07(50g)



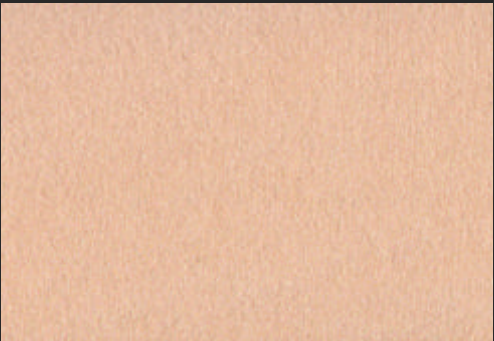
TCF - M07(100g)

PSX - M07(100g)



TCF - M97(30g)

PSX - M97(30g)



TCF - M97(50g)

PSX - M97(50g)



TCF - M97(100g)

PSX - M97(100g)



TCF - M05(30g)

PSX - M05(30g)



TCF - M05(50g)

PSX - M05(50g)



TCF - M05(100g)

PSX - M05(100g)



TCF - M96(30g)

PSX - M96(30g)



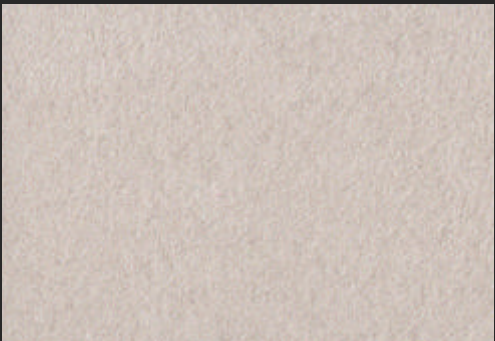
TCF - M96(50g)

PSX - M96(50g)



TCF - M96(100g)

PSX - M96(100g)



TCF - M107(30g)

PSX - M107(30g)



TCF - M107(50g)

PSX - M107(50g)



TCF - M107(100g)

PSX - M107(100g)



TCF - M87(30g)

PSX - M87(30g)



TCF - M87(50g)

PSX - M87(50g)



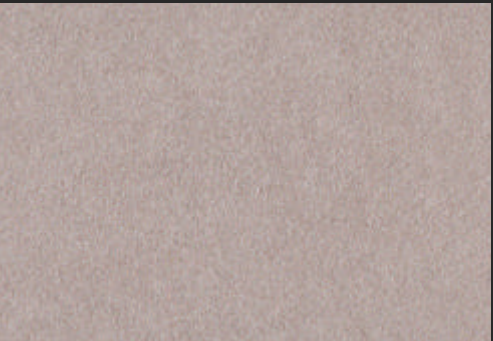
TCF - M87(100g)

PSX - M87(100g)



TCF - M50(30g)

PSX - M50(30g)



TCF - M50(50g)

PSX - M50(50g)



TCF - M50(100g)

PSX - M50(100g)



TCF - 6226(30g)

PSX - 6226(30g)



TCF - 6226(50g)

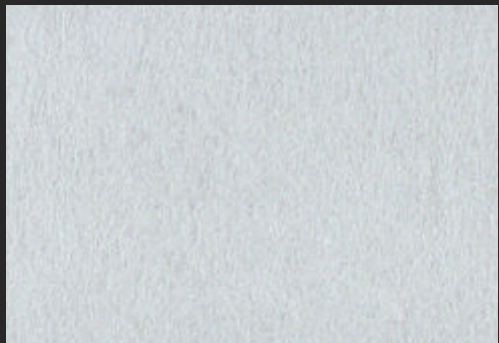
PSX - 6226(50g)



TCF - 6226(100g)

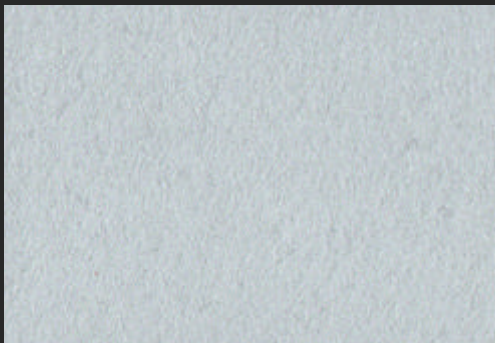
PSX - 6226(100g)





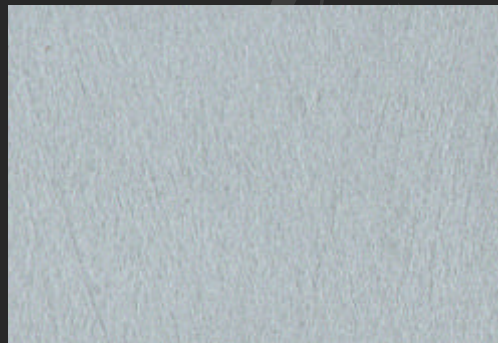
TCF - M75(30g)

PSX - M75(30g)



TCF - M75(50g)

PSX - M75(50g)



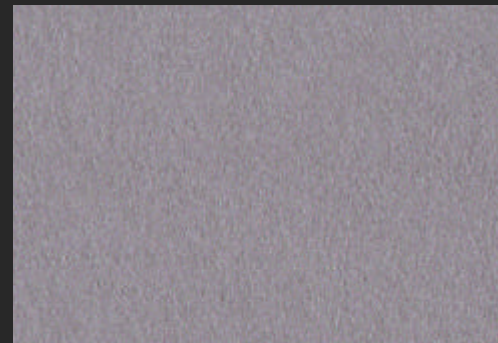
TCF - M75(100g)

PSX - M75(100g)



TCF - M88(30g)

PSX - M88(30g)



TCF - M88(50g)

PSX - M88(50g)



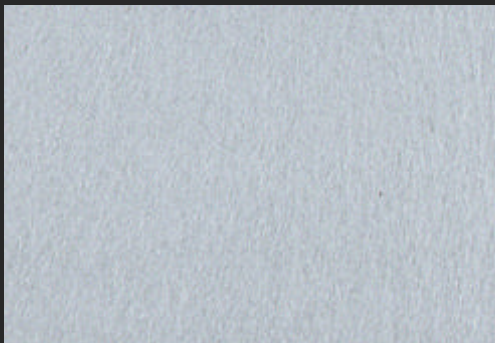
TCF - M88(100g)

PSX - M88(100g)



TCF - M23(30g)

PSX - M23(30g)



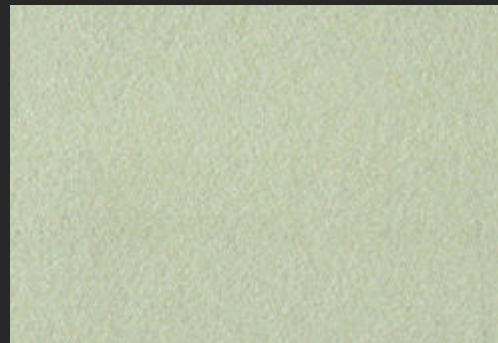
TCF - M23(50g)

PSX - M23(50g)



TCF - M23(100g)

PSX - M23(100g)



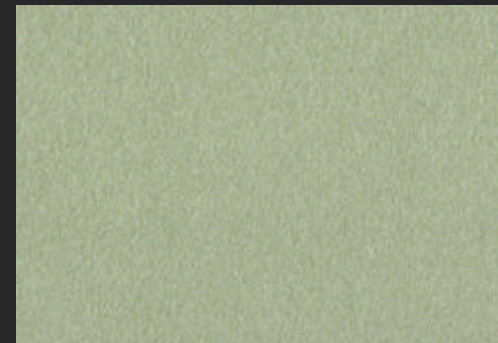
TCF - M61(30g)

PSX - M61(30g)



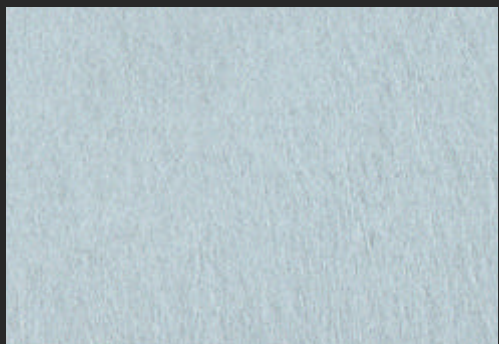
TCF - M61(50g)

PSX - M61(50g)



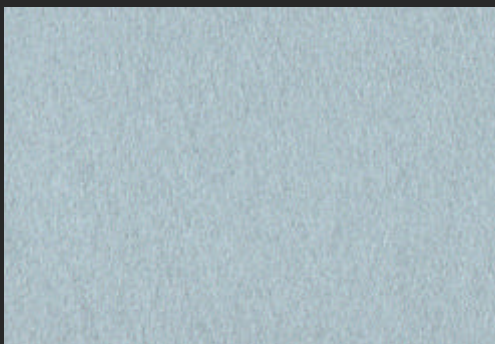
TCF - M61(100g)

PSX - M61(100g)



TCF - M51(30g)

PSX - M51(30g)



TCF - M51(50g)

PSX - M51(50g)



TCF - M51(100g)

PSX - M51(100g)



TCF - M42(30g)

PSX - M42(30g)



TCF - M42(50g)

PSX - M42(50g)



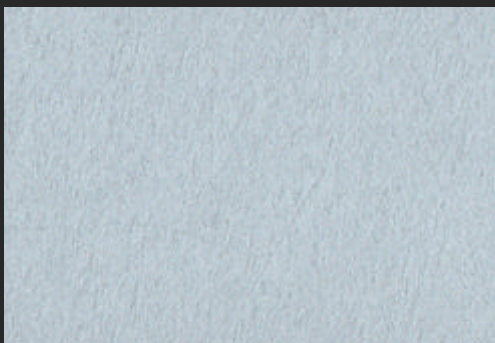
TCF - M42(100g)

PSX - M42(100g)



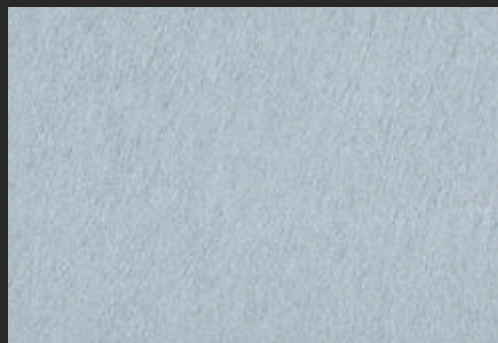
TCF - M81(30g)

PSX - M81(30g)



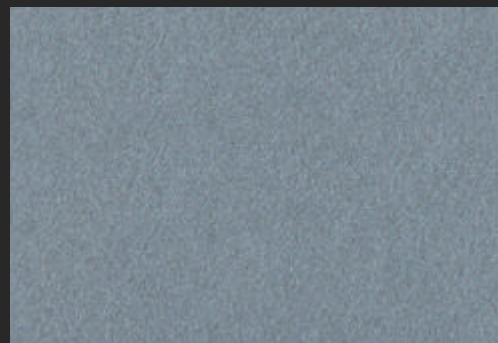
TCF - M81(50g)

PSX - M81(50g)



TCF - M81(100g)

PSX - M81(100g)



TCF - M104(30g)

PSX - M104(30g)



TCF - M104(50g)

PSX - M104(50g)



TCF - M104(100g)

PSX - M104(100g)



# INNOVATION | CONCEPT | ENVIRONMENTAL

Design by Manntree in United Kindom

[www.manntree.co.uk](http://www.manntree.co.uk)

**Manntree®**  
— Paint My Love —



Characteristics:	Superior feel and construction of surfaces		
Main ingredients	British fluff powder, pearl powder, inorganic minerals, cellulose	Net weight	5kg / barrel
Shelf life	12 months in dry condition at room temperature (at the time of original delivery)	Reference dosage	4-6m² /kg/2times

## Sheffield

Sheffield ( formerly Sheffield )is a prototype from Sheffield Downtown, England, a city known as the City of Steel. With thegreat advancement of the industrial revolution,the world-famous stainless steel was born in 1912.British collectors prefer these slightly glossy art derivatives.Enlightened by the original Fusherfield, the metal gloss hidden in the surface is the biggest bright spot of this material, which gives more metal gloss to the wall under the cover of a strong'metal halo". Nowadays, Manntree has brought the original metal sense to China, incorporating more British "metal" elements into itsdesign.

## Features

- ① Original British fluff and pigments, Smooth and delicate touch, stable color
- ② Fluidized design , Gradual matte cloud-like effect with ease
- ③ Roller coating or brush coating are both acceptable, Easy to operate, natural effect
- ④ Easily resist daily stains and scratches,Repeatedly scrubbing, clean as new

## Selective construction

After 24 hours of drying, if waterproof treatment is required, waterproof super wax can be chosen.

## Technical description

- ① Different batches of materials can not be applied to the same wall.
- ② Different substrates will make the color (possibly) different.
- ③ The material that has been mixed with water should be used up within 24 hours.
- ④ Waterproof Super Wax must be used when applying to non-waterproof walls or in lavatories.

## Base surface requirements

- ① Cement mortar substrate needs to be maintained for more than 6 days, PH less than 11 degrees
- ② Neutral putty, leveling, sanding, dust can be directly after construction
- ③ The mortar base needs to be leveled and polished with putty powder, and alkaline putty should be maintained for about 15 days.
- ④ When renovating the old wall, the base surface needs to be flat and free of cracks, shedding, bulging, dust and oil stains.

## Matters needing attention

- ① Please mix thoroughly first.
- ② Pay attention to the critical point of the environment: it can not be applied if the temperature is lower than 5°C and the relative humidity is higher than 85 %.
- ③ Please keep it out of the reach of children.

## Scope of application

High-quality European wall velvet, suitable for interior wall decoration, and must not be exposed to moisture.  
At the same time, it has high-quality cashmere texture  
We recommend using it in the living room or study/bedroom.

## Technical support

Feel free to visit Manntree's official website [www.manntree.co.uk](http://www.manntree.co.uk) to get the latest information about this product.

## TOOLS



Wool Roller



Pig Hair Brush

## Construction Technology

Note: Under normal circumstances, each construction interval of at least 4-6 hours



- ① Please stir"Sheffield" thoroughly before use



- ② Evenly apply the sealing primer, and the bottom layer should be completely waterproof after brushing.



- ③ Dilute with approximately 30% water



- ④ Brush the walls 1-2 times with a non-standard method.



- ⑤ Finished effect.